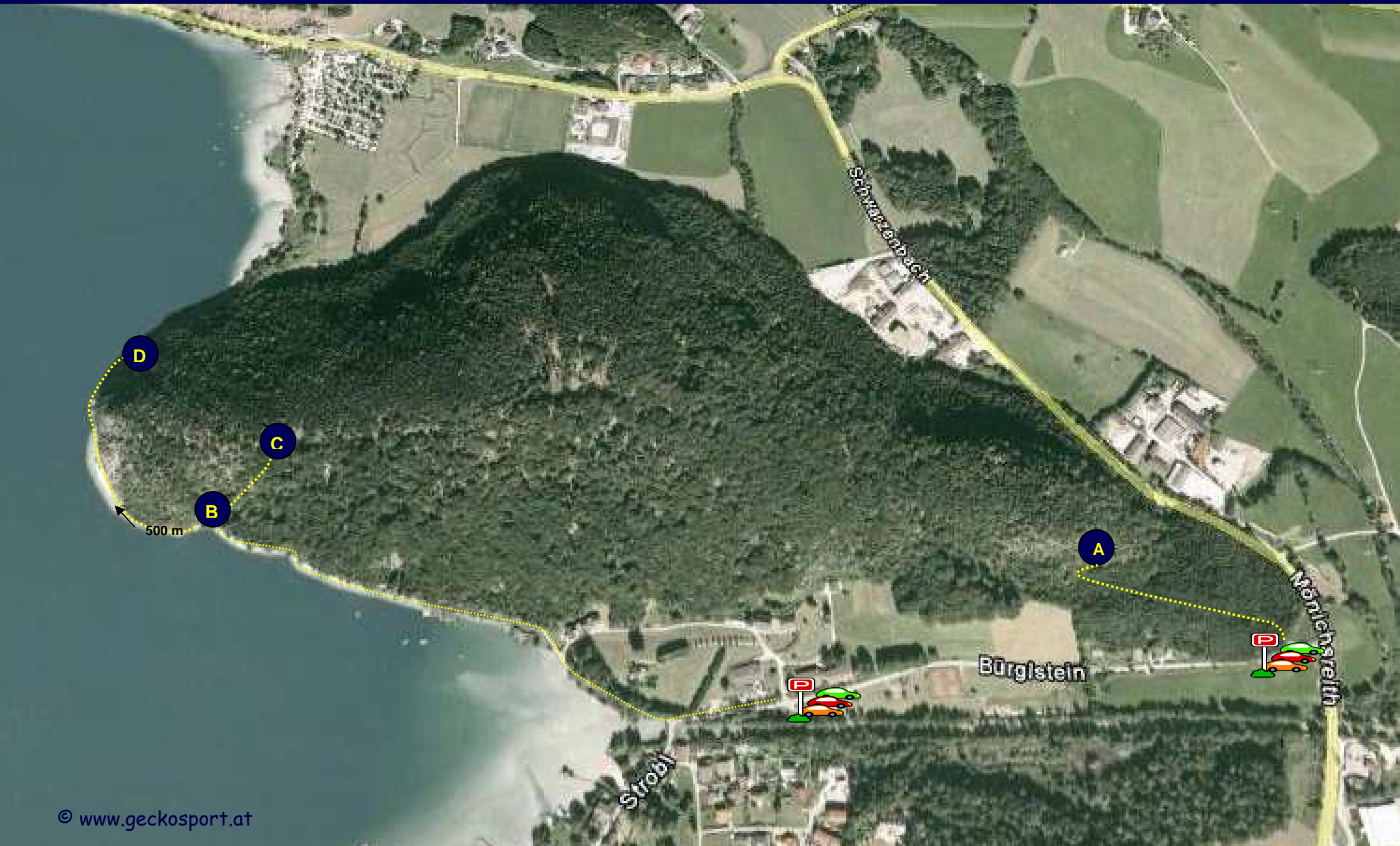
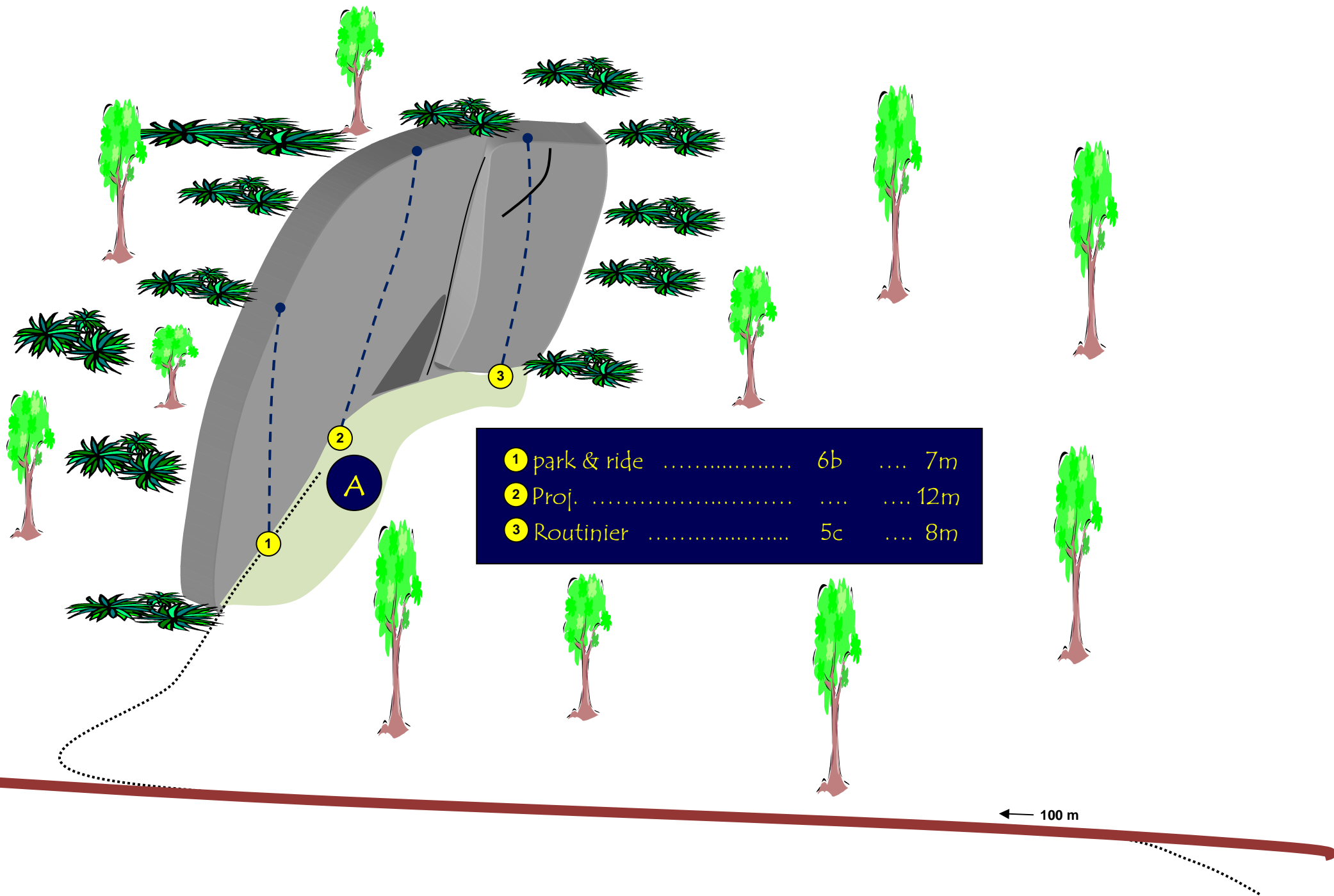


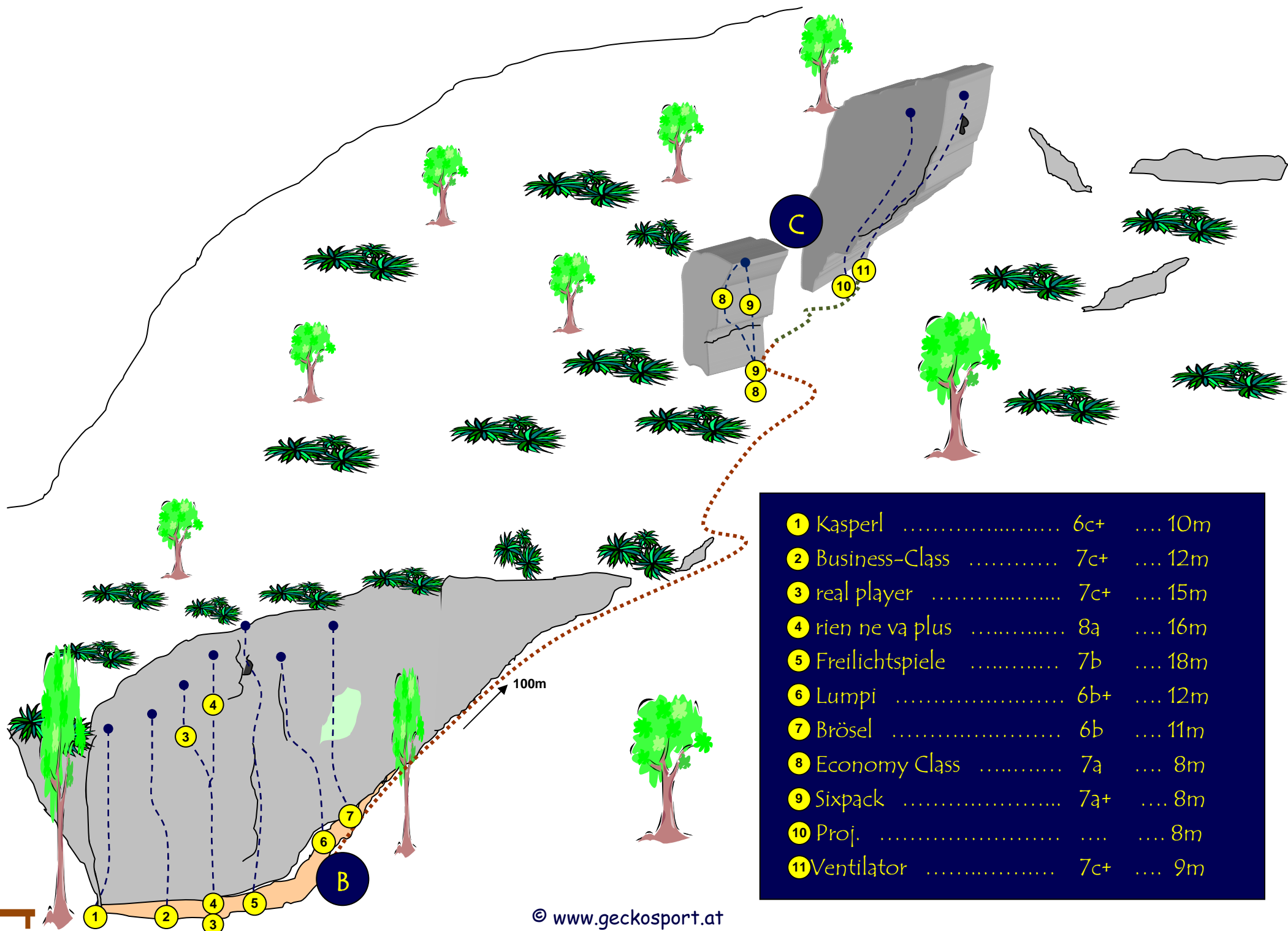
Routentopo Strobl / Wolfgangsee - Bürglstein

Anreise-Zustieg: Ort Strobl/Wolfgangsee - Panoramaweg Bürglstein. Parkmöglichkeit beim BIFEB in Strobl. Zustieg 10-20min.

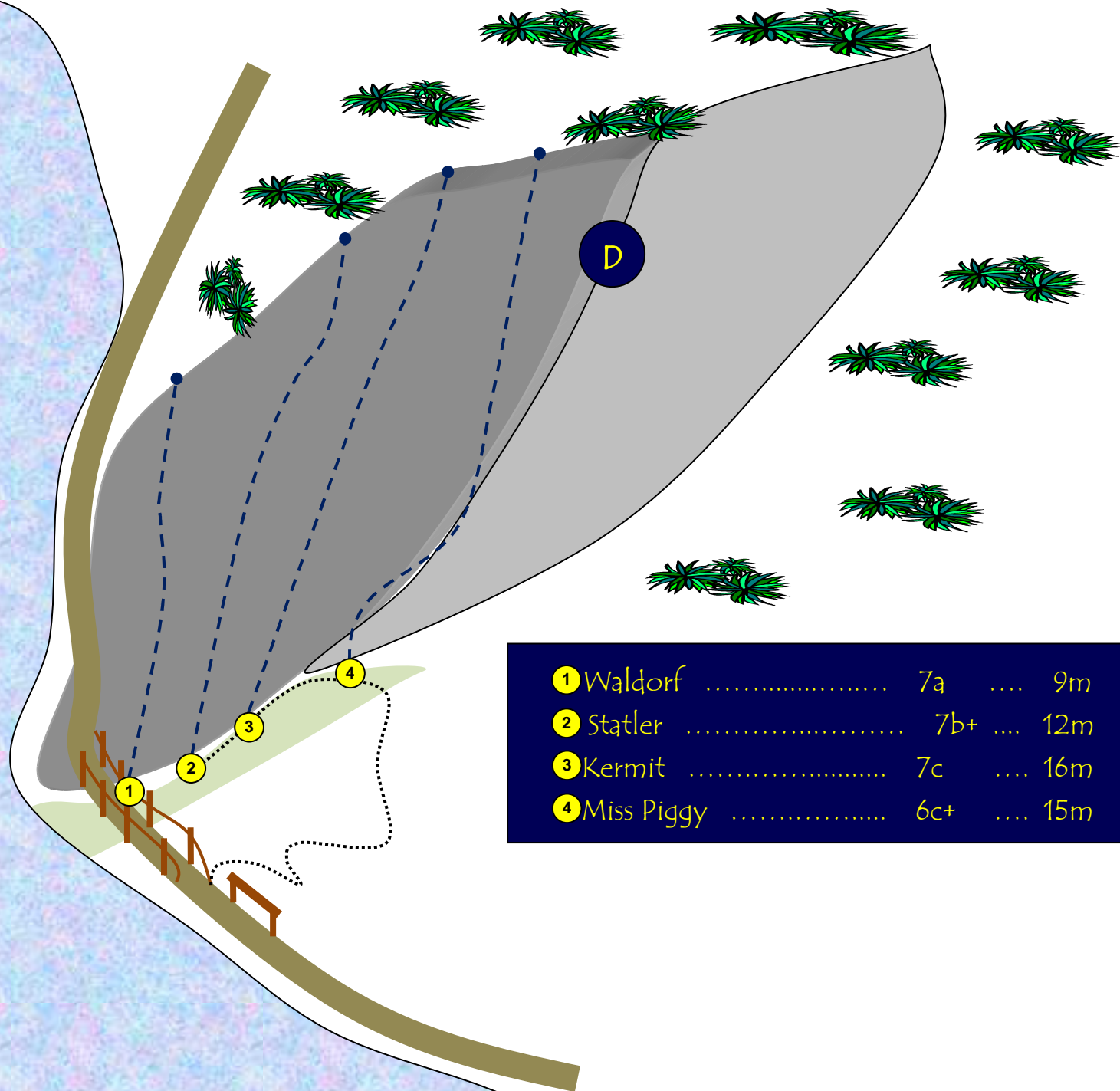




1	park & ride	6b	7m
2	Proj.	12m
3	Routinier	5c	8m



1	Kasperl	6c+	10m
2	Business-Class	7c+	12m
3	real player	7c+	15m
4	rien ne va plus	8a	16m
5	Freilichtspiele	7b	18m
6	Lumpi	6b+	12m
7	Brösel	6b	11m
8	Economy Class	7a	8m
9	Sixpack	7a+	8m
10	Proj.		8m
11	Ventilator	7c+	9m



1	Walddorf	7a	9m
2	Statler	7b+	12m
3	Kermit	7c	16m
4	Miss Piggy	6c+	15m